

oakheart



£575,000

Guide Price

Mersea Road, Colchester



Guide Price: £575,000 - £600,000.

Offered with no onward chain is this well positioned along the ever-popular Mersea Road in Colchester, this spacious detached bungalow offers over 1,700 sq. ft. of versatile accommodation, ideal for families, multi-generational living, or buyers seeking generous single-storey space. With no onward chain, the property provides a straightforward and appealing opportunity.

The bungalow features a well-proportioned layout beginning with a welcoming entrance hall that leads through to two bright and comfortable living rooms, offering excellent flexibility for relaxing or entertaining. The

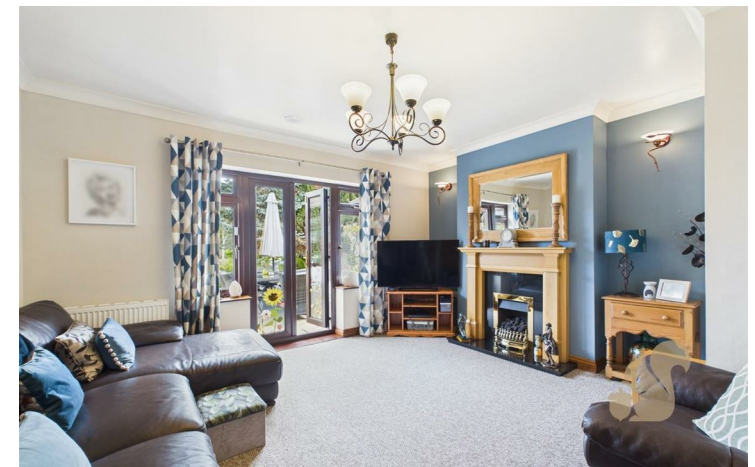
kitchen is centrally located and well-appointed, with easy access to the dining room, making it perfect for family meals and hosting guests.

There are three bedrooms in total, including a notably large main bedroom. A dedicated office provides an ideal workspace for home working or study. The accommodation is further enhanced by a family bathroom, an additional shower room, and a useful utility room.

Externally, the property boasts a substantial rear garden—an attractive and private space with plenty of room for outdoor seating, play areas, or gardening enthusiasts. Beyond the garden sits a large detached garage

measuring 29'11" x 9'7", offering excellent storage, workshop potential, or secure parking. Ample off-road parking is also available to the front.

Conveniently located within easy reach of Colchester city centre, local shops, schools, and transport connections, this generous and adaptable bungalow is a rare find in such a well-regarded area. Perfect for those seeking space, practicality, and a home they can tailor to their needs.

















**Approximate total area<sup>(1)</sup>**  
161.2 m<sup>2</sup>  
1735 ft<sup>2</sup>

GIRAFFE360

oakheart